

Vol 41, Issue 1,
March 2019

He Pātaka Tuku Kōrero

Kia ora tātou, welcome to the first issue of NZARE's member newsletter for 2019. We have made a great start to the year with the NZARE council meeting and NZJES Editors Hui in February. We are pleased to announce this years council members are:

Mere Skerrett (VUW) Co President	Fua pepe Rimoni (VUW) Pasifika Caucus rep
Agnes McFarland (TWWoA) Co President	Michelle Johansen (AU) Pasifika Caucus rep
Linda Bonne (NZCER) Vice President & SIG portfolio	Kay-Lee Jones (UC) Student Emerging Researcher rep
Kirsten Locke (AU) Secretary	Carrie Vander Zwagg (Massey) Student Emerging Researcher rep
Robyn Caygill (MOE) Treasurer	Kimai Tocker (AU) Liason portfolio
Jenny Ritchie (VUW) Immediate past president & Ipu Kererū Editor	Rachel Martin (OTA) Liason portfolio
Katrina McChesney (WAI) Ipu Kererū Editor—Social media	Jeanette Clarkin-Phillips (WAI) Membership portfolio
Maraea Hunia (NZCER) Māori Caucus rep	Jo Fletcher (UC) Conference Convenor 2019
Haturini McGarvey (TWWoA) Māori Caucus rep	Margie Hohepa (WAI) NZJES Ed Board Chair

CONFERENCE 2019 SAVE THE DATE

Our annual NZARE conference will be held on **18 Nov—20 Nov** at The University of Canterbury, Te Whare Wānanga o Waitaha. Associate Professor Jo Fletcher is the 2019 conference convenor.

The team at Canterbury have made a great start planning the coming conference. A great rate for on campus accommodation has been secured and invitations to guest speakers have been sent.

Pre-conference events for the Māori & Pasifika caucuses and SIG groups are not confirmed and will be planned for the weekend prior to the Conference.

NZARE



TE HUNGA RANGAHAU MĀTAURANGA O AOTEAROA
NEW ZEALAND ASSOCIATION FOR RESEARCH IN EDUCATION

INSIDE THIS ISSUE

Council updates	1
SIG Update	2
SIG Update	3
SIG Update	4
He Poroporoaki	5
Māori Caucus reo Symposium	6
Reo Monograph.....	7
Student Emerging Caucus.....	8
Pasifika Caucus Update.....	8
Website update.....	8
Ipu Kererū NZARE Blog	9
Social media	9
Royal Society.....	10

If you have an item you would like to contribute to the next Newsletter in June [contact](#) Kelly



NZARE SIG'S 2019

Thank you and Welcome!

NZARE Council expresses our sincere thanks to those who convene the SIGs. In particular, we thank the co-convenors who have recently stepped down, after investing considerable effort, time, and thought to ensure their SIGs thrive. We thank the following co-convenors: Bronwen Cowie and Suzanne Trask (Assessment SIG), Sue Cherrington and Maggie Lyall (ECE SIG), and Alison Kearney and Roseanna Bourke (Inclusive Education & Community SIG).

We welcome our new and continuing (co-)convenors, and two new SIGs: Learning Environments and Mathematics & Statistics Education.

SIGs met at the November conference, to look back on the year's achievements and discuss plans for 2019. All SIGs are aiming to develop their student and emerging researcher membership this year. Updates from some of the SIGs are included below

SPECIAL INTEREST GROUP (SIG) UPDATES

WANT TO JOIN A SIG?

We currently have the following SIG groups you can join:

- Adult and Tertiary Education
- Assessment
- Early Childhood Education
- Education Policy
- Educational Ideas
- Educational Leadership
- Inclusive Education & Community
- Learning Environments
- Mathematics & Statistics / Pāngarau Education
- New Zealand Centre for Action Research Network (NZCARN)
- Researching Education for Sustainability
- Science Education Research

Please contact a SIG convener or email nzare.eo@gmail.com
SIG details can be found [here](#)

ASSESSMENT

A big thank you to Bronwen and Suzanne, who have stepped down as co-convenors after 2 years. The new co-convenors are Kerry Earl Rinehart and Frances Edwards from Waikato University.

We held a successful Assessment SIG hui in Wellington last September. SIG members' preference is for this day to be held separately to NZARE conference more details will follow concerning our 2019 hui. We are currently considering a presence at teacher conferences, for example, ULearn, in a way similar to that of Science SIG at SciCon.

EDUCATIONAL IDEAS

The Educational Ideas SIG had an interesting stream of papers at the 2018 NZARE conference, with a number of new participants from both within and beyond New Zealand. A SIG meeting was held on 27 November.

It was pleasing to note that most abstracts submitted in 2018 were clearly relevant to the brief for the SIG. Consideration was given to possibly changing the name of SIG e.g. Philosophy of Education, but most present at the meeting felt that it would be best to keep it as it is. Members of the SIG are keen to retain their connections with other SIGs, particularly Education Policy. Two mid-year events have been held since the SIG was formed, and another gathering is a possibility for 2019, either during the year or in conjunction with the conference in Christchurch.

EARLY CHILDHOOD EDUCATION

The ECE SIG had a successful year last year. We have an active list of 66 members and had a well-attended Hui before the conference this year. The highlight of the year was the presentation of the two 2018 SIG awards presented both to joint winners. The first the Judith Duncan award was

presented jointly to Maria Cooper and Marek Tesar and the Lyn Foote award winners were Anne Pairman and Sonja Arndt, also jointly. All four of these winners showcased some of the best work of the last year and highlight some of the fantastic and varied research going on in the ECE sector.

The ECE SIG had a great NZARE conference in 2018 with 18 conference abstracts accepted, including three panels. Thanks to all of the members who reviewed abstracts for the conference. We also had a well-attended business meeting and saw further development of our Facebook page with the appointment of a web convenor. This page is used for group discussions but is a closed group so members need to apply to join. Our hui this year was attended by 49 attendees, including our keynotes by Lesley Rameka and Nicola Yelland. With four well-attended panels and opportunities for networking and discussion we also had a great turnout of Postgraduate students who had a poster session. Thank you to all members for your support this year.

Sue Cherrington and Maggie Lyall are both stepping down as co-convenors. Waveney Lord continues as a convenor. The ECE SIG would like two additional co-convenors to work alongside Waveney in this active SIG, with a large membership. Please [contact](#) Waveney if you are interested

MATHEMATICS & STATISTICS—PĀNGARAU EDUCATION



This new SIG held its first hui in Wellington on 18 February. The gathering of 26 from around the country included Fiona Ell of Auckland University who presented some thought-provoking ideas in “Hunting for treasure through mathematics education research”.

Notes from the meeting are available [here](#)

The group discussed some adjustments to the SIG aims, which are reflected in the updated webpage. The SIG’s name was also changed from Mathematics Education Research to

Mathematics & Statistics—Pāngarau Education.

The SIG’s new co-convenors are Raewyn Eden [contact](#) and Pania Te Maro [contact](#)

SCIENCE EDUCATION

Based on our SIG meeting and member input at Conference 2018, the key event for the science SIG will be a writing symposium/retreat on a shared theme pre-conference in Canterbury in November.

There was some talk of linking in with ASERA in Queenstown, but due to budget limitations and the low interest in SciCON last year, we’re focusing on this event for 2019

2019 AWARDS

NOMINATIONS OPEN SOON

McKenzie Award—Honours a member's significant contribution to educational research and to NZARE over an extended period of time

NZARE Group Award—Recognises a significant education research project undertaken in Aotearoa by a group of researchers for their contribution to the body of Māori and/or Pasifika research

Te Tohu Pae Tawhiti Award—Recognises researchers who have made a significant contribution to Māori education by conducting high quality research over an extended period of time

Sutton Smith Doctoral Award—for an excellent Doctoral thesis by a member

Rae Munro Award—For an excellent Masters-level thesis by a NZARE member in an area which has implication for teacher education or classroom practice.

Ranginui Walker Te Reo Māori Doctoral Award—For research in Education written in te reo Māori by a NZARE member who has completed a high-quality doctoral thesis in te reo.

ECE SIG AWARDS

Lyn Foote Award—for student research in Early Childhood is given to a current NZARE member who has completed a high-quality masters or doctoral thesis.

Judith Duncan Award—for Early Childhood research is given to a NZARE member who has made notable contributions to the field of Early Childhood Education and care through the conduct of high – quality research.

STUDENT TRAVEL AWARDS

Each year NZARE encourages student members to attend the annual conference by making travel grants available. You can find more information [here](#)

INCLUSIVE EDUCATION & COMMUNITY

A big thanks to all those who have supported us as new convenors for this SIG, in particular Alison Kearney and Roseanna Bourke, the previous convenors.

It was great to have 15 presentations under the SIG banner at the NZARE conference, along with 10 people turn up to the SIG meeting. It was noticeable that many of the people showing this interest were emerging researchers who looking to connect with others doing similar work in principle, but not necessarily in a common context. The diversity of contexts that each of us is operating in poses some interesting questions about how to continue to bring people together.

A note of concern from emerging researchers, is that once they complete a qualification, their access to resources disappears very quickly. This sometimes includes access to people within institutions. As emerging researchers leave their academic institutions, where are the points of connect and resourcing for those who are continuing their research work in the community. Is there a role for NZARE in negotiating with academic institutions for ongoing access to library resources for NZARE members.

Inclusion is no longer just a reference to disability as in earlier uses of the term. Disability is still a strong feature, but the concept and associated activity is changing as signified by the inclusion of the term community in the SIG title. This signals a challenge for us, to provide a focus, when we could otherwise struggle to be all things to all people.

Our meeting established that keeping people informed of potential points of interest, was our first role, and if there was opportunities to come together outside of NZARE then we should look for these. Thus we will be encouraging researchers to attend The Inclusive Education Summit (TIES) in Auckland later in the year as well as coming together in Christchurch at this years NZARE Conference.

LEARNING ENVIRONMENTS

The new Learning Environments SIG was ratified at the 2018 NZARE AGM and is up and running!

We have plans for a Learning Environments Symposium in late October – more details to follow soon.

Find more information on SIG aims, rationale and research interests [here](#).

SIG co-convenors are Dr Elaine Khoo and Suzanne Trask.

To join the mailing list email Suzanne [contact](#) or Elaine [contact](#)

He Poroporoaki



He poroporoaki ki a Hemanawa Temara nā Agnes McFarland

*E te mareikura takoto tīraha mai nā i tō urunga tapu.
Kua totohu te tipare ā-hau o kawakawa ki te puna wai o Hine.
Te mātāpuputu o te reo karanga ki paetawhiti.
Kua ngaro atu rā koe te manu tioriori ki te motu.
Kua taupae atu rā ki tua o te wharau.
Ei! te kurahuna o Te Urewera
Kua tīokaokahia ake nei te whārangi rau pūangiangi ki ngā nohanga
matamata o te Kahui manu.
Aue taukuri e te mamae!
Takoto i runga i te karanga o tō tipuna a Hinenuitepō.
Kua tokoiti koutou.
Kua pani tō whānau
Kua pani tō hapū
Kua pani tō iwi
Kua pani tō whenua e takoto nei.
E hoki ki te tātaihangā mai o tō whakapapa.
E hoki ki Te Whītau Tarapī o Hinepūkohurangi
Hoki wairua atu rā, te reo whakatangitangi, whakaohoooho i te awatea!*

He toikupu tuku oha ki a Hemanawa Olive Temara nā Haturini McGarvey

E te manu kaewa o te wao, te hurunuku tiriripa o te ao mahamaha, te kōkō tātaki o te nehenehe pū a Tāne!

E tiu, e oha, e hoka ki tua o pou kapua rangi!

Kua ngū tō reo, te reo kōrihi ki waenganui o te kāhui kura, ngā kākā tarahae ki te aropā, te uru kahikatoa ki te wao, te heke tūi e kō ana i te ata kōparapara, anō ko Hine-ata ki te ata hihiri, ki te ata rarama!

Takiri ata te ao mārama!

Tihei!

Hemanawa was an NZARE member who has made significant contributions to the Māori Caucus including the recent reo Symposium. Sadly, Whaea Hema passed away last week.

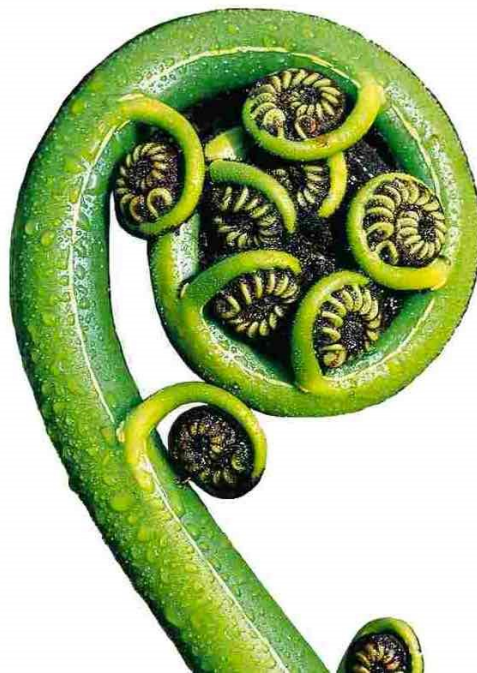
Hema was a staunch advocate for the revitalisation of reo Māori. She was a Te Papa educator and caretaker of Māori taonga & heritage. Her contributions to our national museum spanned over 20 years.

She is a founder of the Wellington based Tuhoe Kapa Haka group Tū Te Maungaroa. This group allowed Tuhoe living outside the rohe to retain, maintain and practice their tradition tuhoetanga away from home. Hema will be dearly missed amongst the caucus.



MĀORI CAUCUS UPDATE

Reo Symposium Māui Taumata Rau Tāmaki Makaurau 2018



Ngā kōrero a ngā Mātāpuputu

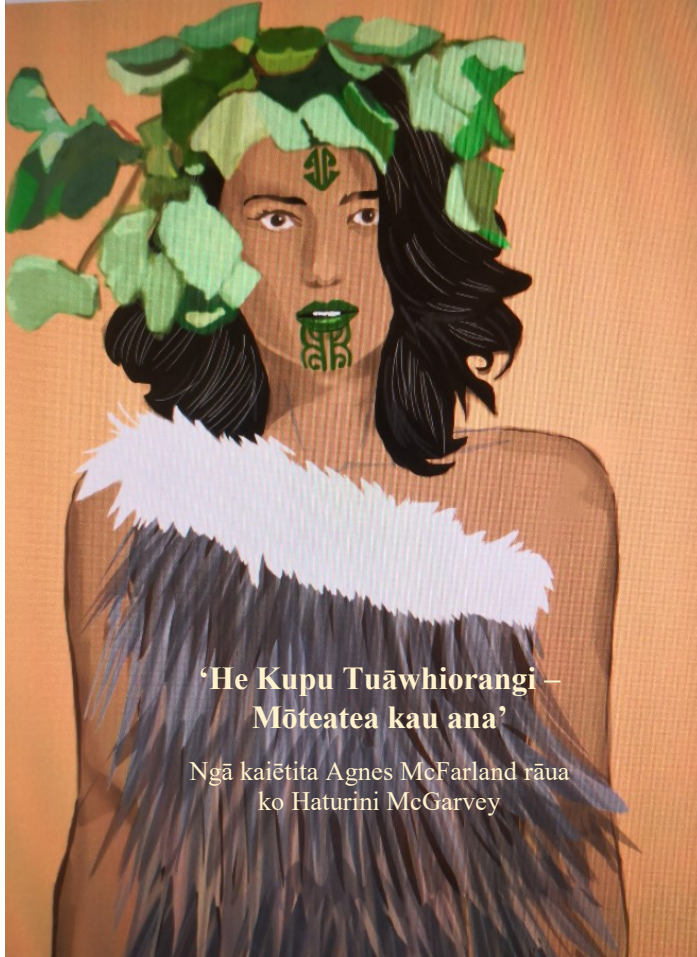
Nā Hema Temara

Ko te karanga i runga i o tātau marae te reo tuatahi ka rongohia i runga i ngā marae, huri i te motu. Ka honoa atu anō hoki te wāhanga ki o tātau tangihanga. Ko taku moemoeā, kia kapohia mai e ngā whakatipuranga tēnei o ngā taonga a ngā mātāpuputu. Inā ia ko te whakaoho a ngā manu i te taiao, e rangonahia ai ngā korokoro tui, ngā pihipihi, ngā piere, te rearea, te korimako.

Ia ata he rerekē te whakaatu mai a te taiao i ngā mea papai e whakaatunga mai ana. Ōrite tēnei ki te karanga, he maha hoki āna mahi, ko te tangihanga, te mārena, te huritau, te hura kōhatū, te takahi whare, te whakatuwhera whare, pōhiri, arā atu, arā atu. Ēnei tūmomo karanga e whakaritea atu ana ki te tangitangi mai a ngā manu e whakaoho ana i te atatū, otirā, ka puta ko te whakatauki: “He ao te rangi ka ūhia, he manu ka rere” Ahakoa e pā kē ana tēnei whakatauki ki a Tamaterangi mō ōna kākahu, e tika ana kia tikina atu hai whakaatu i te reo whakapaoho o te kaikaranga.

Tōnā wairua e tikina atu ana, hai whakatuwhera i te rangi ki te reo o te kaikaranga, e whakaritea atu ai tōnā reo ki te karearea e rere ana ki ngā taumata tiketike, e puta ai tēnei o ngā whakatauki mai i Ruatāhuna, te wharekura o Huiarau.” Iti rearea teitei Kahikātea ka tāea. Ko ngā moemoeā rā tēnei, ahakoa te teitei, ka tāea noatia te nanao atu. Koinei rā te āria o te kaikaranga ki tāna mahi ki runga i ngā marae, ā tae atu hoki ki te aria o ngā taonga pūoro. Ka riro hoki mā te reo Māori hai rāhiri i te mita o te reo o Ngāi Tūhoe e karanga ana e urutomo mai ai te ao ki roto i a Ngāi Tūhoe. E kawea ai te rongo ki ngā tōpito o te ao, ki te tuku mātauranga, mōhiotanga ki te minenga e whakaeke ana ki runga i te marae. Koinei te āhua hai kawea mā te kaikaranga.

He Kupu Tuāwhiorangi
Reo Monograph NZARE Māori Caucus



Whakahiwa te whetu nui o te ata!
Te uranga mai o te ata huakirangi!
Tīaho i roto, mārāma i roto!
Wānanga i roto, mārāma i waho
Tēnei te kete, te kete ārewa o te wānanga!
Rewa ake nei ko Manu-nui-i-te-rā!
Hihiri te rā! Hahana te ao! Ko Tauira!
He tupua, he tawhito, he māneanea!
He kupu tuawhiorangi ki te matua iwi hū!

Tēnei rā te reo aumihi, te kupu tuāwhiorangi anō he manu hokahoka ki ngā pae kōtihitihi o te ngahuru toi matua rangi. Koia tēnei ko ngā kohikohinga kōrero e kīa nei ko ‘He Kupu Tuāwhiorangi’, hai kete amonga mā te ngākau mākoi e hihiri nei ki ngā kupu tuāwhiorangi o te whare kōrero, o te whare mōteatea, te whare pora, te whare hakahaka o Tāne-rore. Ko ngā kaituhi kōrero o tēnei pukapuka reo Māori nō ngā hau e whā, e kaingākau koihotahota nei ki te whakamōhiki ake i te reo rangatira me ōna tōngarerewa puiaki nui. Kia noho ko tēnei pukapuka reo Māori hai pūtea whakanakonako mā te matua iwi e hū nei te whatu manawa ki te whai i te ara tiketike mātauranga a koro mā, a kui mā.

Inā te kupu kōrero, “Kai te matamata o te ārero te toi whakairo tūāwhiorangi.”

STUDENT/EMERGING RESEARCHERS CAUCUS

We are excited to welcome Kay-Lee Jones, our new Māori student representative to Council this year. Kay-Lee is in her third year of a Doctor of Education degree at the University of Canterbury and has over thirteen years of experience in education.

Her research area is Māori medium education particularly bilingual education. Kay-Lee will work with returning student rep (and newly minted Dr - hooray!) Carrie Vander Zwaag and our capable student leadership team of Olivera Kamenarac, Suzanne Trask, Anney Collin and Marianne Simon. If you haven't done so already, please join the NZARE Student and Emerging Researcher Facebook page [here](#) to keep up to date with the latest NZARE student/ER happenings ranging from celebrating member successes to potential travel/scholarship opportunities and regional writing retreat/house swap options!

Thanks to Kay-Lee, we're also well on our way to exploring affordable conference accommodation and networking venues! All the best for 2019

PASIFIKA CAUCUS UPDATE

The Pasifika caucus held many successful events during 2018 and look to continue that success with symposium sessions to promote Pasifika researchers in 2019. Collaborations with the Māori caucus and South Island conference committee for the 2019 symposium are a focus for the year.

NZARE WEBSITE

A focus for the NZARE council in 2019 is to update our website and make it more user friendly. We are in the process of evaluating new website platforms.

We aim to have this website up and running in time to sign up for the 2019 conference in Christchurch. We are adding better registration forms, better payment facilities, updating information as well as redesigning the look and feel making it more user friendly.

Keep an eye out for updates coming very soon.



Ipu Kererū NZARE BLOG

Our blog, *Ipu Kererū*, continues to go from strength to strength. Many thanks to all those NZARE members who contribute posts and keep this a lively, topical space. Recent posts include ...

A/Prof Tracy Riley on funding and support for gifted education ([link](#))

Dr Sherrie Lee on native languages in tertiary education ([link](#))

Dr Cara Swit on whether preschoolers are really capable of 'bullying' ([link](#))

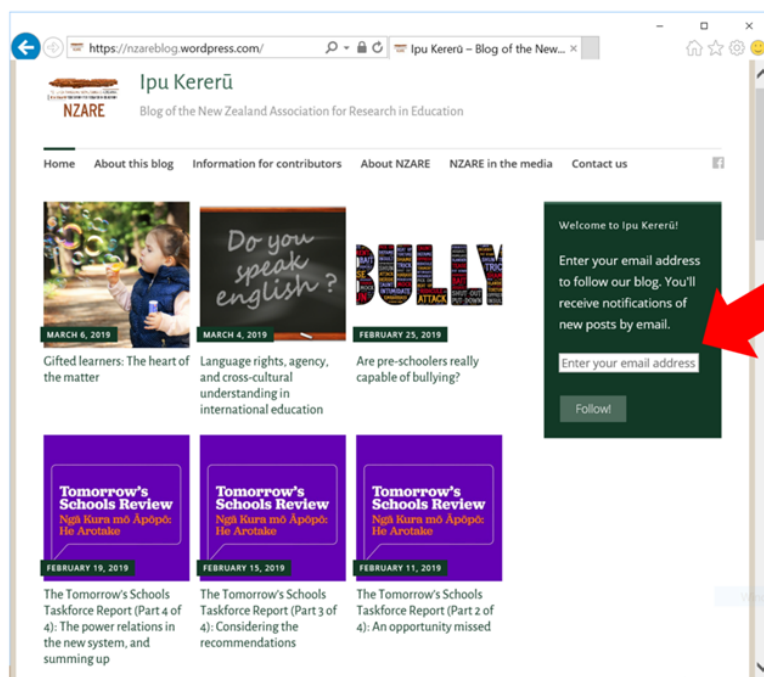
Prof Martin Thrupp and Dr Katrina McChesney on the Tomorrow's Schools Review ([link](#))

Dr Ann Milne on how our education system serves (or doesn't serve) Māori students ([link](#))

Melissa Derby on kaupapa Māori approaches to early literacy ([link](#))

You can also browse a collection of our top 10 most-read posts of 2018 [here](#).

When you visit our blog, don't forget to enter your email address in the green box – then you'll get all our new posts directly to your email inbox.



Our blog posts are being used in tertiary teaching across Aotearoa NZ, including at Victoria, Massey, Waikato, Te Rito Maioha, Unitec, Canterbury, Open Polytechnic, and Wintec. Lots of schools, ECE centres and Kāhui Ako are also using our blog posts in their professional learning, inquiry and reflection. It's great to see these connections between research, teacher education, and teaching practice!

Would you like to contribute a post to Ipu Kererū?

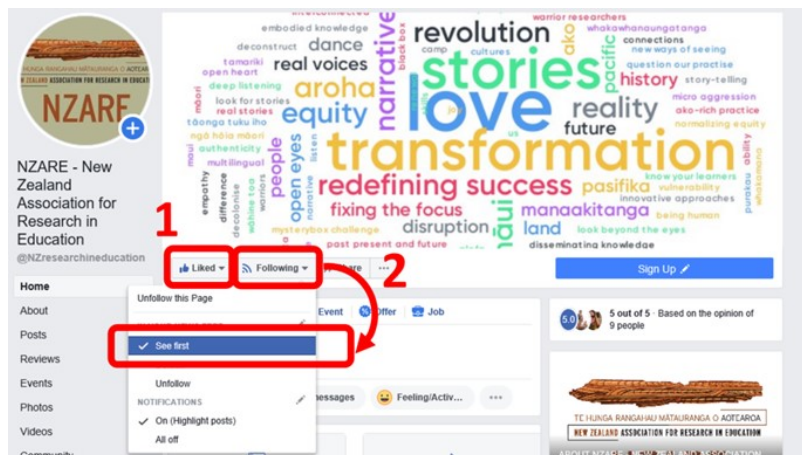
Blog posts are 800-1000 word articles written in a clear, easy-to-read style to suit a broad audience. You can summarise recent research, share your views on a topic of interest, or turn a recent talk, conference

presentation or conversation into a post that can be shared with a wider audience. Email blog@nzare.org.nz and we'll help you get started. We'd love to hear from you!

Think you could help run Ipu Kererū?

We are wanting to expand the editorial team for *Ipu Kererū*. Editors could come from any career stage (including postgraduate students); full training will be provided and we are open to negotiating ways of sharing the workload depending on people's skills, interests and availability. Contact us at blog@nzare.org.nz if you think you might be interested.

NZARE SOCIAL MEDIA



Are you following us on Facebook? 'Like' our page at <https://www.facebook.com/NZresearchineducation/> and then set your visibility settings to 'see first in newsfeed' so that you don't miss our posts.

If you're a student or emerging researcher, please also join our dedicated group at

<https://www.facebook.com/groups/NZAREStuER/>

or if you teach or supervise postgraduate students, please share this link with your

students. Māori, Pāšifika and international students are very welcome in this space – nau mai, haere mai – he waka eke noa.



EXPLORE | DISCOVER | SHARE

NZARE CONTACT INFO

EXECUTIVE OFFICER

Kelly Te Paa

12a Anaheim Place
Churton Park
Wellington, 6037

Phone: 021-233-6505
E-mail: nzare.eo@gmail.com

If you have any question or queries please do not hesitate to get in contact with Kelly.

[Facebook](#)
[NZARE BLOG—Ipu Kererū](#)

ROYAL SOCIETY—TE APĀRANGI

NZARE is proud to be a constituent organisation member of the Royal Society Te Apārangi.

The Royal New Zealand Society are now accepting nominations for the following Fellows and awards

Applications open for [Science Media Savvy](#) workshops—Auckland

These highly-acclaimed workshops offer researchers first-hand insight into the workings of news and social media, as well as hands-on, practical exercises to improve communication

Māori Media SAVVY, Auckland 10-11 June—[application open now](#)

Auckland, University of Auckland 17-18 June—[application open now](#)

ANZCCART: Using Animals in Science, [NCEA resource](#)

The Australian and New Zealand Council for the Care of Animals in Research and Teaching (ANZCCART) has developed a student resource called 'Using Animals is Science'

Opportunity: L'Oréal Aust & NZ Women in Science Fellowship [nominations open](#)

Applicants for the Australian and New Zealand Fellowships worth \$25,000 are now open

NOMINATIONS

[Call for nominations to Fellowship of the Royal Society Te Apārangi](#)

[Call for nominations for Companion of the Royal Society Te Apārangi](#)

[Call for Royal Society Te Apārangi Medals and Awards](#)

[2019 Royal Society Te Apārangi Charles Fleming Fund application open](#)

Charles Fleming Publishing Award for up to \$8,000 to support preparation of scientific books and relevant publications | Charles Fleming Senior Scientist Award annual grant worth up to \$10,000 to support a senior scientist's research. Closing date 29 March 2019.